

DIGIFLEX® DIGITAL SERVO DRIVES MODEL: DR100EE100A40NDC

FEATURES:

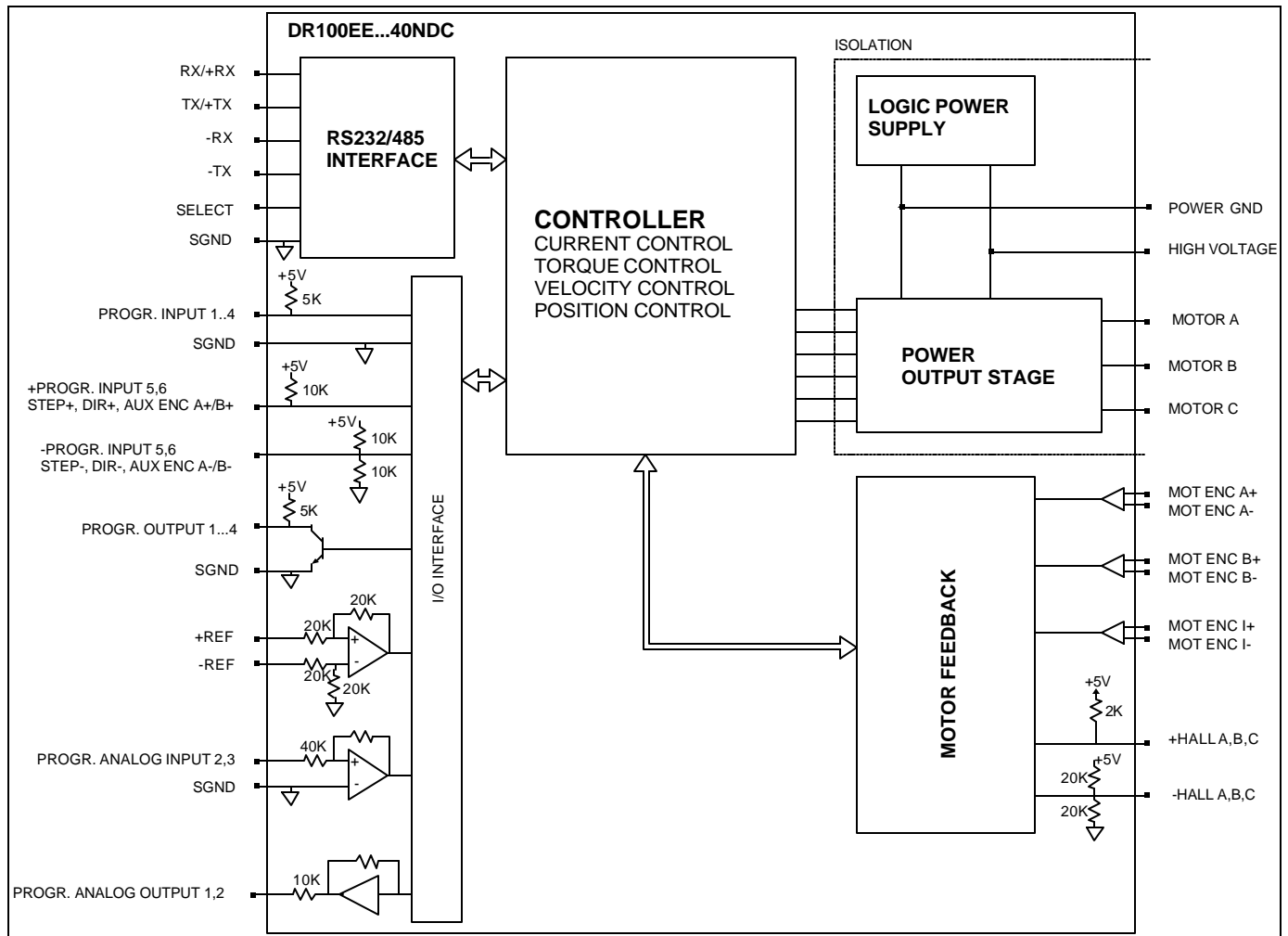
- Fully digital, state-of-the-art design
 - Space Vector Modulation and vector control technology
 - 15kHz Digital current loop with programmable gain settings
 - PIDF velocity loop with 133 microsecond update rate
 - PID + FF position loop with 133 microsecond update rate
 - Hall sensor + encoder or encoder-only based commutation
 - Surface-mount technology
 - Small size, low cost, ease of use
-
- RS232/485 interface for setup and networking
 - Windows© based setup software with built-in 8-channel digital scope
 - Operates in torque, velocity or position mode with programmable gain settings
 - Programmable profiling in all modes
 - Fully configurable current, voltage, velocity and position limits.
 - Step & direction mode for stepper replacement
 - Encoder following with programmable gear ratio
-
- 4 programmable digital inputs
 - 2 programmable differential inputs, configurable as step & direction, master encoder, or secondary encoder for dual loop operation
 - 4 programmable digital outputs
 - 2 programmable analog inputs (10-bit)
 - 14-bit reference input or programmable analog input
 - 2 programmable analog outputs (10-bit)
 - Encoder output (from motor, optionally buffered)
-
- Four quadrant regenerative operation
 - Bi-color LED status indicator
 - Extensive built-in protection against:
 - over-voltage (programmable)
 - under-voltage (programmable)
 - short-circuit: phase-phase, phase-ground
 - over-current
 - over-temperature



ADVANCED MOTION CONTROLS

3805 Calle Tecate, Camarillo, CA 93012
Tel: (805) 389-1935, Fax: (805) 389-1165

BLOCK DIAGRAM:



DESCRIPTION:

The DR100EE Series digital PWM servo drives are designed to drive brushed and brushless servomotors. These fully digital drives can operate in torque, velocity, or position mode and employ Space Vector Modulation (SVM), which results in higher bus voltage utilization and reduced heat dissipation. The command source can be generated internally or can be supplied externally. In addition to motor control, these drives feature dedicated and programmable digital and analog inputs and outputs to enhance interfacing with external controllers and devices.

DR100EE Series drives feature a single RS232/485 interface, which is used for drive configuration and setup as well as online operation in networked applications. Drive commissioning can be accomplished through a fully graphical Windows© based application.

All drive and motor parameters are stored in non-volatile memory.

SPECIFICATIONS:

POWER STAGE SPECIFICATIONS	DR100EE100A40NDC
DC SUPPLY VOLTAGE	60...400 VDC
PEAK CURRENT	100A (70.7Arms)
MAXIMUM CONTINUOUS CURRENT	50A (35.3Arms)
MINIMUM LOAD INDUCTANCE	600 μ H
SWITCHING FREQUENCY	15 kHz
HEATSINK (BASEPLATE) TEMPERATURE RANGE	0 to 65 °C, disables at 65 °C
POWER DISSIPATION AT CONTINUOUS CURRENT	600W
MIN. UNDER VOLTAGE SHUTDOWN	60 VDC
MAX. OVER-VOLTAGE SHUTDOWN	425 VDC

MECHANICAL SPECIFICATIONS	
POWER CONNECTOR: P1	Screw terminals
MOTOR FEEDBACK CONNECTOR: CN3*	15-pin high density female D-sub
I/O CONNECTOR: CN2*	26-pin high density female D-sub
COMMUNICATIONS INTERFACE (RS232/485): CN1*	9-pin female D-sub
SIZE	10.65 x 9.14 x 4.05 inches 270.5 x 232.1 x 102.8 mm
WEIGHT	11.6 lbs. 5.3 kg

* Mating connectors are not included.

PIN FUNCTIONS:

P1 - Motor and Power Connector:

CONNECTOR	PIN	NAME	DESCRIPTION	I/O
P1	1	MA	Motor phase A	O
	2	MB	Motor phase B	O
	3	MC	Motor phase C	O
	4	POWER GND	Power ground.	GNDPWR
	5	HIGH VOLTAGE	DC power input	I

CN3 - Motor Feedback Connector:

CONNECTOR	PIN	NAME	DESCRIPTION	I/O
CN3	1	+Hall A	Commutation sensor inputs. Internal 2K pull-up to +5VDC. Can be used with single ended or differential Hall sensors.	I
	2	+Hall B		I
	3	+Hall C		I
	4	MOT ENC A+	Differential Encoder Input. For single ended encoder signals, leave the A-terminal open.	I
	5	MOT ENC A-		I
	6	MOT ENC B+	Differential Encoder Input. For single ended encoder signals, leave the B-terminal open.	I
	7	MOT ENC B-		I
	8	MOT ENC I+	Differential Encoder Input. For single ended encoder signals, leave the I-terminal open.	I
	9	MOT ENC I-		I
	10	-Hall A*	See CN3-1. Leave open in case of single ended Hall sensors.	I
	11	-Hall B*	See CN3-2. Leave open in case of single ended Hall sensors.	I
	12	SGND	Signal ground	SGND
	13	+5V OUT	+5V @ 250mA max. Short-circuit protected.	O
	14	PAI3	Programmable analog input, single ended, 10-bit	I
	15	-Hall C*	See CN3-3. Leave open in case of single ended Hall sensors.	I

CN2 – I/O Connector:

CONNECTOR	PIN	NAME	DESCRIPTION	I/O
CN2	1	PDO1*	Programmable digital output	O
	2	SGND	Signal ground	SGND
	3	PDO2*	Programmable digital output	O
	4	+REF	Differential reference signal input, 14-bit	I

5	-REF	resolution. Can also be used as programmable analog input 1.	I
6	PAI2	Programmable analog input	I
7	PAO1	Programmable analog output	O
8	PAO2	Programmable analog output	O
9	-PDI6	Programmable Input (see CN2-18) or Direction- or Aux Enc B-	I
10	PDO3	Programmable digital output	O
11	PDI1	Programmable digital input	I
12	PDI2	Programmable digital input	I
13	PDI3	Programmable digital input	I
14	PDO4	Programmable digital output	O
15	+5V OUT	+5VDC. Note: the total current on CN2-15 and CN3-13 combined should not exceed 250 mA	O
16	SGND	Signal ground	SGND
17	+PDI5	Programmable differential digital input, or Step+ or Aux Enc A+	I
18	+PDI6	Programmable, differential digital input or Direction+ or Aux Enc B+	I
19	PDI4	Programmable digital input	I
20	Encoder Channel A+	Encoder Output (from connector CN3), not buffered	O
21	Encoder Channel A-		O
22	Encoder Channel B+	Encoder Output (from connector CN3), not buffered	O
23	Encoder Channel B-		O
24	Encoder Channel I+	Encoder Output (from connector CN3), not buffered	O
25	Encoder Channel I-		O
26	-PDI5	Programmable Input (See CN2-17) or Step- or Aux Enc A-	I

* Contact factory for SE compatible

CN1 - Communications Interface (RS232/485):

CONNECTOR	PIN	NAME	DESCRIPTION	I/O
CN1	1	SELECT	RS232/485 selection. Pull to ground (CN1-5) for RS485.	I
	2	TX/+TX	RS232: Transmit; RS485: +TX	O
	3	RX/+RX	RS232: Receive; RS485: +RX	I
	4	N/C	Not connected	
	5	SGND	Signal ground	SGND
	6	-TX	RS485: -TX	O
	7	N/C	Not connected	
	8	-RX	RS485: -RX	I

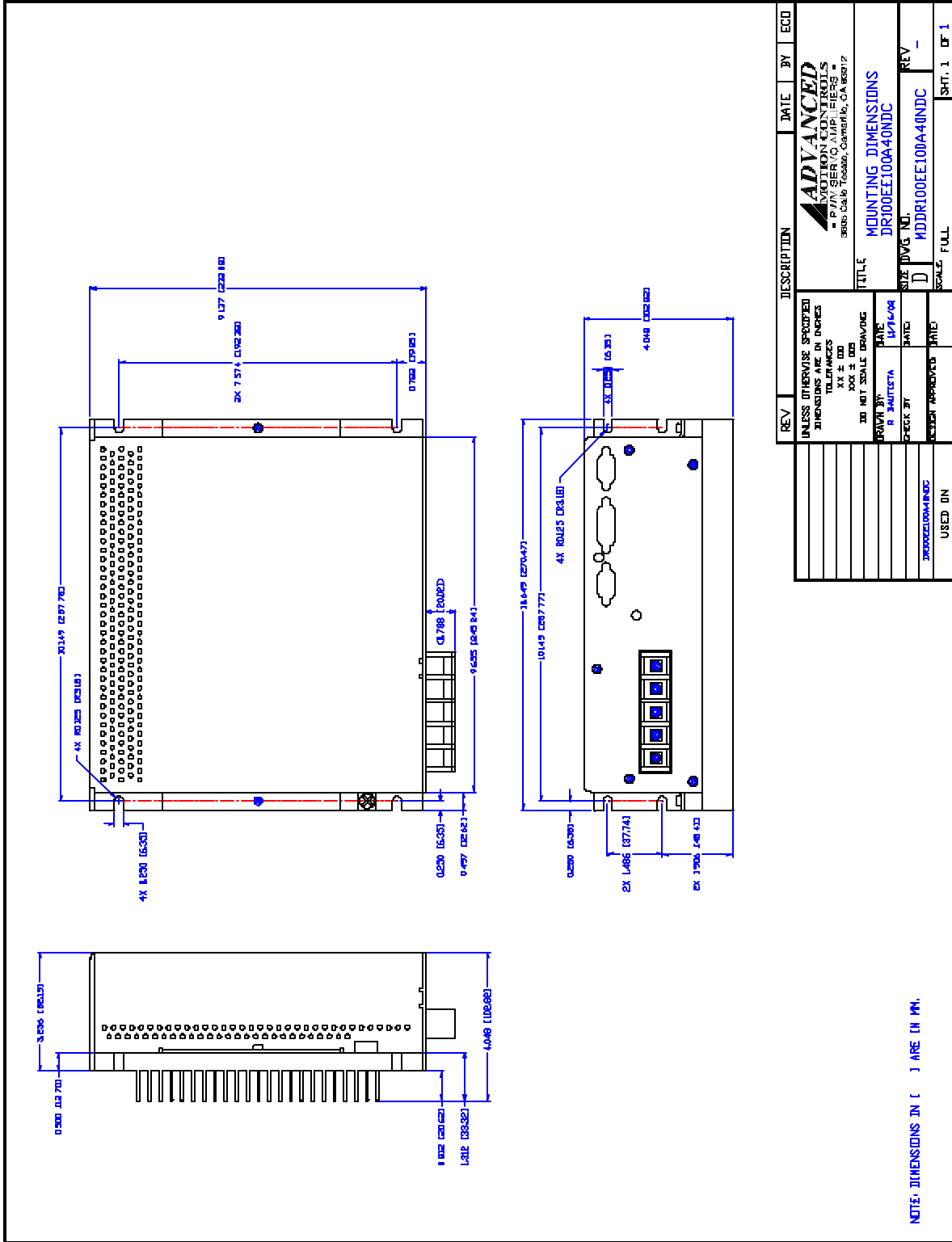
	9	N/C	Not connected	
--	---	-----	---------------	--

ORDERING INFORMATION:

Standard model: DR100EE100A40NDCX

X indicates the current revision letter.

MOUNTING DIMENSIONS:



NOTE: DIMENSIONS IN [] ARE IN MM.

REV	DESCRIPTION	DATE	BY	ECD
	UNLESS OTHERWISE SPECIFIED DIMENSIONS ARE IN INCHES TOLERANCES XX ± 0.00 XXX ± 0.005 XXX NET SCALE DRAWING			
	ADVANCED SERVO SYSTEMS FILING SERVICE MAP: 1E252 3850 Calle Trabuco, Camarillo, CA 93612			
	TITLE			
	DR100EE100A40NDC			
	SIZE	DWG NO.	REV	
	DR100EE100A40NDC		-	
	SCALE	FULL	SHT. 1	OF 1
	USED IN			
	DR100EE100A40NDC			